

waterpik®
waterflosser™

Congratulations!

You are now on your way
to better oral health!

✓ Register and Save

Register your product at
*waterpik.com/registration to receive over **\$50**
in savings (includes **50%** off your next order of
assorted tips + tip storage case)

*For Canadian customers, register at
waterpik.ca/registration.

✓ Write a Review

Creating innovative Waterpik® products
that inspire better oral health is our
passion. We invite you to *leave a review by
sharing your thoughts on the Cordless
Advanced Water Flosser on waterpik.com
or the retailer's website.

*US customers only

✓ We're Here to Help

We hope you are loving your new Cordless
Advanced Water Flosser. If for any reason you
are not satisfied or have any product questions,
please contact our fast and friendly Customer
Service Team based in Fort Collins, Colorado.
The Cordless Advanced Water Flosser is backed
by a 1-year manufacturer's warranty.

Call: 1-800-525-2774 (USA)
1-888-226-3042 (CAN)
Monday-Friday
7 am - 5 pm MST

Chat or E-mail
service@waterpik.com



**Quick Start
Guide Inside!**



Register and Save!

Save over \$50!

Register at ***Waterpik.com/Registration** to
receive exclusive discount code.

*For Canadian customers, register at
waterpik.ca/registration

Offer includes
50% off
your next order
of assorted
tips + tip
storage case.



We'd Love to Hear from You!



Connect with Us
@Waterpik



Call: 1-800-525-2774 (USA)
www.waterpik.com

1-888-226-3042 (CAN)
www.waterpik.ca

Waterpik® 14 Day Challenge App



Make water flossing a habit! Try our new mobile App
for the best water flossing experience.



Download on the
App Store



GET IT ON
Google play

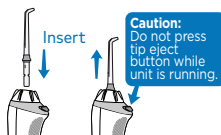
Quick Start Guide

GETTING STARTED

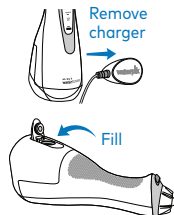
- 1** Charge unit for 4 hours by placing the magnetic charger on the front of the unit.



- 2** Press tip firmly into unit until it clicks into place. To remove tip, push the tip eject button.



- 3** Remove magnetic charger from unit prior to filling with water and during use. Lift the flip top on reservoir and fill with lukewarm water.



Refill as needed.

WATER FLOSS

- 4** With unit OFF, use MODE button to select LOW pressure. Place tip in mouth. Press POWER button once to start flossing. Press the MODE button to adjust pressure settings.



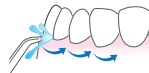
- 5** Lean over sink. Close lips enough to prevent splashing.

Keep unit upright during use to ensure continuous water flow.



TECHNIQUE

- 6** Aim water at the gumline at a 90 degree angle. Follow the gumline and pause briefly between teeth.



NEED HELP?

Visit Waterpik.com/WelcomeWF

To watch a How To Video and find additional product support.

**Call Us! 1-800-525-2774 (USA)
1-888-226-3042 (CAN)**