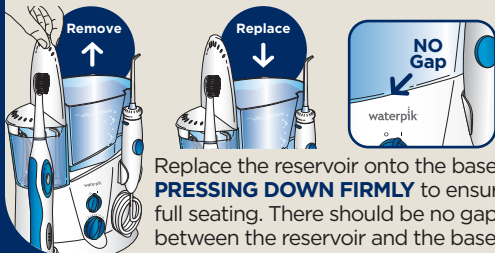


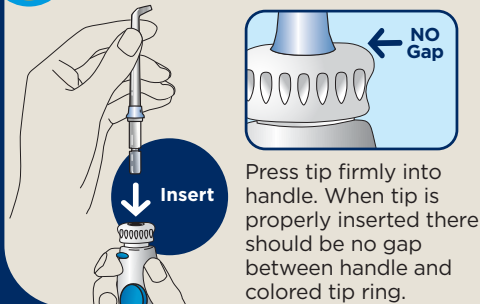
## QUICK START GUIDE

### 1 Prepare the Reservoir:

Lift the hinged reservoir lid and remove the reservoir from base and fill with lukewarm water.



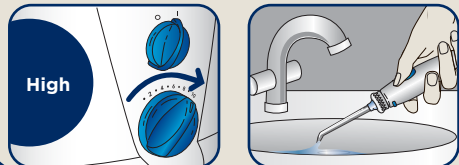
### 2 Select and Insert Tip:



### 3 Prime Unit (First Time Use Only):

#### Prior to Very First Use of Unit, Prime Unit:

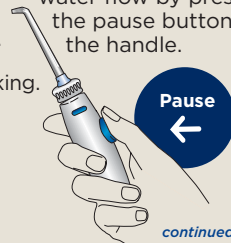
Set pressure control dial on base to **high**, point the handle and tip into sink. Turn unit **ON** until water flows from the tip, turn unit **OFF**.



### 4 Adjust Pressure and Pause Control:

For first time users, adjust pressure control to **lowest position**. Gradually increase pressure to your liking.

You can temporarily stop water flow by pressing the pause button on the handle.

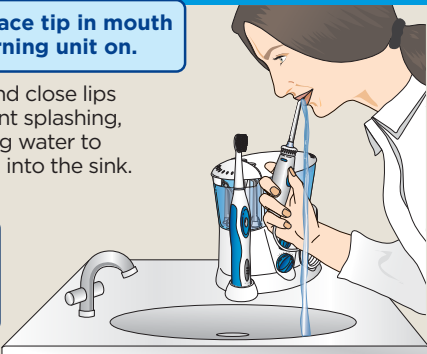


*continued on back*

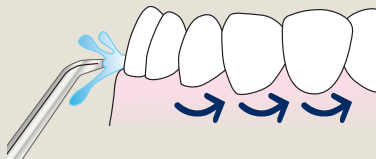
## 5 Using your Waterpik® Water Flosser:

**Always place tip in mouth before turning unit on.**

Lean over sink and close lips enough to prevent splashing, while still allowing water to flow from mouth into the sink. Turn unit **ON**.



Aim the water stream just above the gumline at a 90 degree angle.



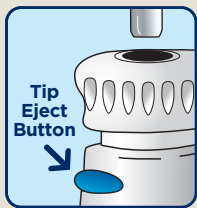
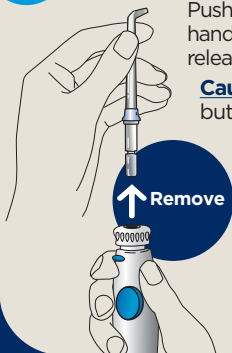
Starting with the back teeth, follow the gumline and pause briefly between teeth.

Continue until all areas around and between teeth have been cleaned.

## 6 Tip Removal:

Push the tip eject button on the handle. The control knob will rise, releasing the tip. Remove the tip.

**Caution:** Do not press tip eject button while unit is running.



## 7 REGISTER YOUR PRODUCT ONLINE NOW!

Receive up to  
**\$44**

in savings on the purchase of additional Waterpik® products.  
[www.waterpik.com/registration](http://www.waterpik.com/registration)

Water Pik, Inc. 1.800.525.2774 • [www.waterpik.com](http://www.waterpik.com)

1730 East Prospect Road, Fort Collins, CO 80553-0001 USA

©2012 Water Pik, Inc.

20016219-F AA