

waterpik

# Instruction Manual Manuel d'instructions Manual de instrucciones

### Model # is located by barcode.

Please write your model # on your sales receipt or below.

### Le numéro de modèle se trouve à côté du code-barres.

Veuillez inscrire le numéro de modèle sur votre reçu de vente ou ci-dessous.

### El número de modelo está ubicado al lado del código de barras.

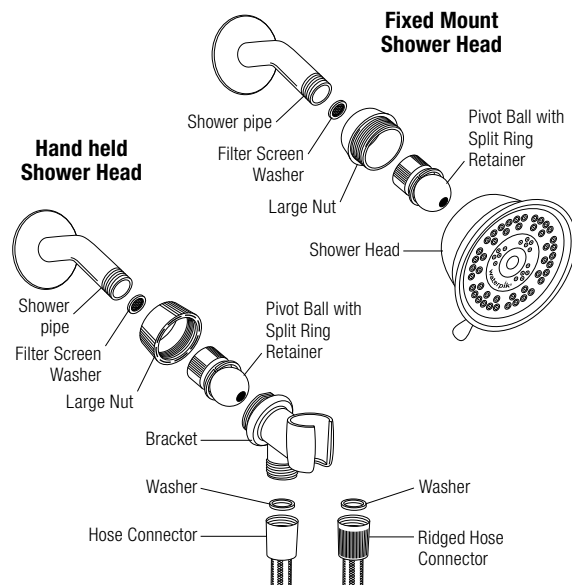
Sírvase escribir el número de modelo en el recibo de compra o debajo.

Model Number:

www.waterpik.com/shower-register

FN 20019192-F AD

## INSTALLATION



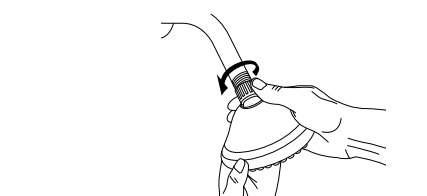
## ENGLISH

Thank you for purchasing this Waterpik® shower head. This booklet provides information to make installation easy and quick. You are close to enjoying a powerful and invigorating shower experience with your new Waterpik® shower head.

You can view more information about Waterpik® shower head products at [www.waterpik.com](http://www.waterpik.com). To learn more about Waterpik® water for wellness® benefits go to [www.waterpikwellness.com](http://www.waterpikwellness.com).

**Note:** pictures depicted may not directly illustrate your shower head.

## PRIOR TO INSTALLATION

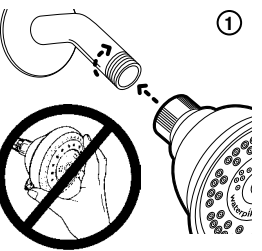


- Remove old shower head and remove all pipe tape.

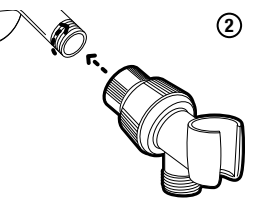
- Ensure that the washer from the old shower is not connected to the shower pipe. Use a thin utensil to check inside the shower pipe for washers, such as a pencil or screw driver. **Do not use your fingers.**
- No tools or pipe tape necessary for shower head installation.



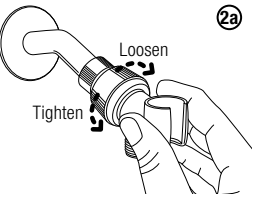
**Note:** The hose provided with your shower head may or may not have a ridged connector. If it does, connect it to the bracket. If it does not, it does not matter which end you connect to the bracket.



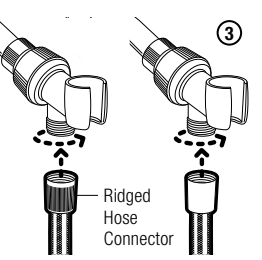
**Fixed Mount Shower Head**  
1. Hand tighten pivot ball to shower pipe. **Do not tighten by holding shower head.**



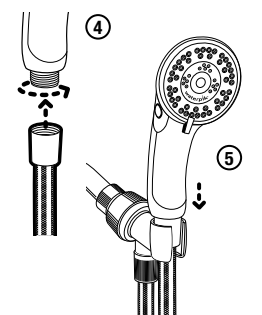
**Hand held Shower Head**  
2. Hand tighten bracket pivot ball to shower pipe.



2a. If your bracket is not positioned properly on the shower pipe slightly rotate the nut clockwise when facing the pipe to loosen, hold the bracket in the desired position and retighten nut.



3. If your hose has a ridged connector, connect the ridged connector to the bracket and hand tighten. If you only have smooth hose connectors, choose either end of the hose and hand tighten to the bracket. (See note below).



4. Connect the other end of the hose to the shower head handle and hand tighten.  
5. Place hand held shower in bracket.

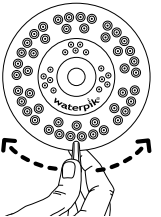
## Vacuum Breaker Backflow Prevention

**Note:** Several U.S. state and local municipal plumbing codes require the use of a backflow prevention device when installing a hand shower. This device is termed a vacuum breaker. If your hand shower includes a vacuum breaker it will be located in the hose, and the hose end with the vacuum breaker will include a sticker that reads "attach this vacuum breaker end to shower bracket." If the hose is not installed in this manner, water will not flow. If your hand shower does not include a vacuum breaker, and you would like to obtain one free of charge, please contact us at **1-800-525-2774** (U.S. calls only) and request part number 20009558.

## OPERATION

### Spray Selector:

Spray Selector allows you select from various spray patterns. Spray pattern is controlled by the small lever that rotates left and right. Access all spray settings by the spray selector lever including water saving trickle.



### Water Saving Trickle Button (On Some Models):

To use the button simply push the toggle button on the back of the shower head. To return to original setting, push button on other side of the shower head.



### WARNING:

- To avoid hot water dangers and conserve even more energy, make sure your water heater is set at 120°F (48.9°C) or below.
  - Test the tub/shower water with your hand before bathing.
  - For additional safety it is recommended that all homes have installed a pressure balance tub and shower valve with the rotational limit stops properly set by a plumber.
  - For external use only.** The potentially deadly amoeba, *Naegleria fowleri*, may be present in some tap water or unchlorinated well water.
- Always ensure the hand held shower head is properly placed in the bracket, so as to prevent the shower head from falling.

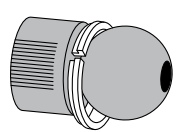
- Do not pull on or tug the flexible hose. This may result in the shower head coming loose and falling.

## CARE AND CLEANING

- To maintain proper working conditions cleaning is required when mineral deposits appear on the spray orifices. To clean mineral deposits, gently rub the rubber nozzles on the face of the shower head to dislodge.
- To clean heavier deposits, remove shower head and soak face down in 1-2 cups of white vinegar (use white vinegar only) for about 2-3 hours. Replace shower head and run in each mode to flush out vinegar.
- Do not clean or rinse any part with harsh chemicals, heavy duty cleaners, or abrasives; this may damage parts or finish and will void warranty.**
- Clean filter screen by removing from the pivot ball and rinse by back flushing to remove particles. Follow steps 1-4 under installation to reinstall shower head.

## TROUBLESHOOTING GUIDE

Problem	Solution
No water flow from installed shower head.	a Confirm previous shower washer is not in the shower pipe. b Confirm there is only one washer in the pivot ball. c Confirm that the shower head hose is installed properly by following step 3.
Low water pressure or missing spray patterns.	a Clean shower head in vinegar/water solution. (See care & cleaning section). b Clean filter screen.
Leaking at pipe pivot ball connection.	a Confirm only one washer is seated on top of the screen. b Grate bar of soap across the shower pipe threads to act as a sealant.
Shower head is too stiff to change angle	a Slightly rotate the nut clockwise when facing the pipe to loosen, hold the bracket in the desired position and retighten nut. (contact Water Pik for further instructions).
Leaking bracket	a Loosen the large nut as instructed in 2a until nut is removed, confirm that the split ring retainer is placed in the nut as specified in the image in the next panel.



**Important:** The split ring retainer is stepped. The smaller part of the retainer should be toward the shower pipe.

## LIFETIME LIMITED WARRANTY

**Save your receipt as proof of purchase is required for warranty action.** Water Pik, Inc. warrants to the original purchaser of this product that it is free from defects in material and workmanship for as long as the original purchaser owns this product. Water Pik, Inc. will replace the product which in our opinion is defective, provided that the product has not been abused, misused, altered or damaged after purchase. (This includes damage due to use of tools or harsh chemicals.) In the event an item has been discontinued we will replace with what we deem to be the closest product. Water Pik, Inc. is not responsible for labor charges, installation, or other consequential cost. The responsibility of Water Pik, Inc. shall not exceed the original purchase price of the product. This warranty gives you specific legal rights. You may also have other rights that vary where you reside.

Water Pik disclaims all other express or implied warranties to the extent permitted by law including, but not limited to, all warranties

of merchantability and fitness for a particular purpose. All implied warranties are limited to the duration of this limited warranty. Some states or provinces may not allow limitation on how long an implied warranty lasts, so above may not apply to you.

**Limitation of Liability:** This limited warranty is your sole remedy against Water Pik and it shall not be liable for any damages, whether direct, indirect, incidental, special, consequential, exemplary or otherwise, including but not limited to property damage, arising out of any theory of recovery, including statutory, contract or tort.

## BINDING ARBITRATION AND WAIVER OF RIGHT TO ASSERT MATTERS IN COURT AND RIGHT TO JURY TRIAL

By purchasing, installing, or using this product you agree that any controversy or claim arising out of or relating to your purchase, use, modification, installation, or removal of this product shall be settled by binding arbitration. The arbitrator's decision will be final and binding. Judgment on the award rendered by the arbitrator may be entered in any court having jurisdiction over the matter. Further, you agree that you will not have the right to litigate any claim arising out of or in relation to your purchase, use, modification, installation, or removal of this product in any court or to have a jury trial on that claim.

Arbitration of any matters shall be administered by the American

Arbitration Association and conducted by one arbitrator in accordance with the consumer arbitration rules of the American Arbitration Association in effect at the time of filing of the demand. The venue for all such arbitrations shall be Colorado and any such arbitration shall be subject to the Federal Arbitration Act and Colorado law.

## WAIVER OF RIGHT TO PARTICIPATE IN CLASS ACTIONS OR PURSUE CLAIMS IN A REPRESENTATIVE CAPACITY.

Further, by purchasing, installing, or using this product you agree that arbitration must be on an individual basis. This means neither you, nor we, may join or consolidate claims in arbitration by or against other purchasers or users of Water Pik products or the general public. Additionally, you may not litigate in court or arbitrate any claims as a representative or member of a class or in a purported representative capacity on behalf of the general public, other purchasers or users of this product, other persons or entities similarly situated, or in a private attorney general capacity.

**If product malfunctions or becomes damaged, stop use and contact Water Pik, Inc. for assistance.**

## Have any questions or need assistance?

For quick service prior to calling have your model number and receipt ready.

In the U.S., call our toll-free Customer Assistance Line **1-800-525-2774**, Monday – Friday, 7:00 AM – 5:00 PM MST. English only. or visit [www.waterpik.com](http://www.waterpik.com)

In Canada, call our bilingual toll-free Customer Assistance Line **1-888-226-3042**, Monday – Friday, 7:00 AM – 5:00 PM MST. or visit [www.waterpik.ca](http://www.waterpik.ca)

© 2020 Water Pik, Inc. Printed in China.

## waterpik

Water Pik, Inc., a subsidiary of Church & Dwight Co., Inc. 1730 East Prospect Road Fort Collins, CO 80553-0001 U.S.A. [www.waterpik.com](http://www.waterpik.com)

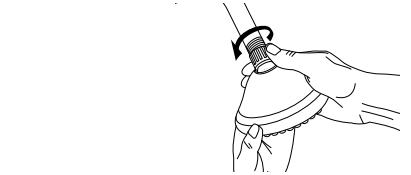
## FRANÇAIS

Nous vous remercions pour l'achat de cette douchette Waterpik®. Ce livret fournit des instructions pour une installation rapide et facile. Vous allez bientôt pouvoir profiter d'une douche énergisante et revitalisante grâce à votre nouvelle douchette Waterpik®.

D'autres informations sur les douchettes Waterpik® sont disponibles sur le site [www.waterpik.com](http://www.waterpik.com). Pour en savoir plus sur les bienfaits water for wellness® de Waterpik®, visitez le site Web [www.waterpikwellness.com](http://www.waterpikwellness.com).

**Note :** Les illustrations incluses peuvent ne pas représenter exactement le produit acheté (douchette).

## AVANT L'INSTALLATION



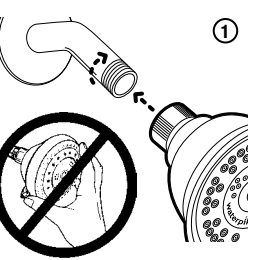
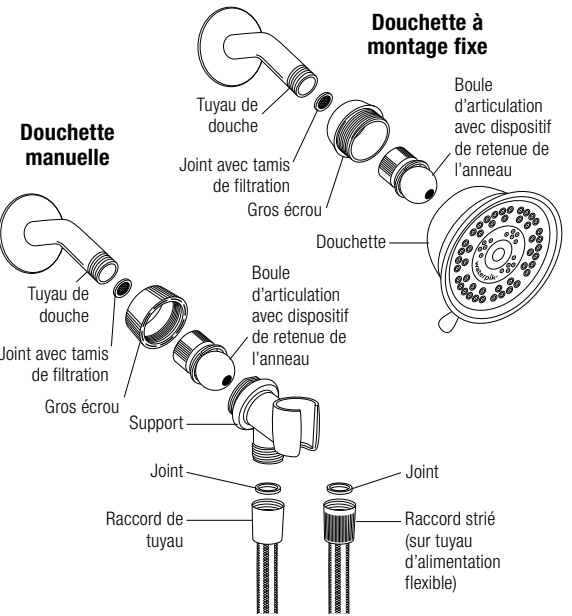
- Retirez l'ancienne douchette et enlevez l'adhésif à tuyauteries.

- Veiller à ce que le joint de la douchette existante ne reste pas attaché sur le tuyau de douche. Utiliser un ustensile mince tel un crayon ou un tournevis pour vérifier qu'aucun joint ne se trouve à l'intérieur du tuyau de douche. **Ne pas utiliser les doigts.**

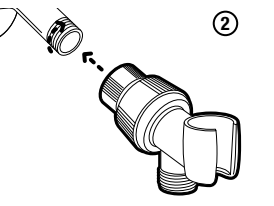


**Remarque :** Le tuyau fourni avec la douchette peut avoir ou ne pas avoir de raccord strié. Si le tuyau est doté de ce type de raccord sur une extrémité, alors raccorder cette extrémité au support. Si ce n'est pas le cas, alors n'importe laquelle des deux extrémités peut être raccordée au support.

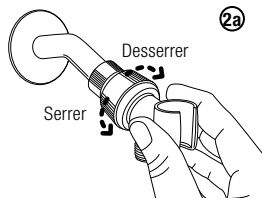
## INSTALLATION



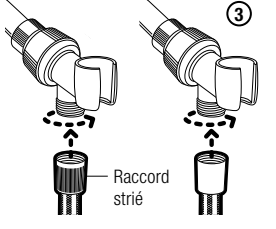
**Douchette à montage fixe**  
1. Serrer la boule d'articulation sur le tuyau de douche à la main. **Ne pas serrer en tenant la douchette.**



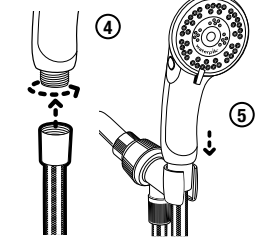
**Douchette manuelle**  
2. Serrer la boule d'articulation du support sur le tuyau de douche à la main.



2a. Si le support n'est pas bien positionné sur le tuyau de douche, faire légèrement pivoter l'écrou dans le sens horaire lorsque celui-ci est orienté vers le tuyau pour le desserrer, maintenir le support à la position souhaitée et serrer à nouveau l'écrou.



3. Si votre flexible est doté d'un raccord strié, installez le raccord strié sur le support, puis serrez à la main. Si vous ne disposez que de raccords de flexible lisses, choisissez l'une des extrémités du flexible, puis serrez l'écrou à la main sur le support. (Voir la remarque ci-dessous)



4. Raccorder l'autre extrémité du tuyau à la douchette manuelle et serrer à la main.  
5. Placer la douchette manuelle dans le support.

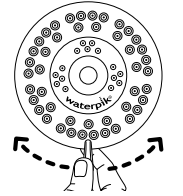
## Brise-vide/Prévention du reflux :

**Remarque :** Plusieurs codes de plomberie fédéraux et municipaux locaux des É.-U. requièrent l'installation d'un dispositif de prévention de reflux pour l'installation d'une douchette manuelle. Ce dispositif est connu sous le nom de brise-vide. Si la douchette manuelle comprend un brise-vide, celui-ci se situe dans le tuyau et l'extrémité du tuyau avec le brise-vide comporte un autocollant sur lequel est inscrit « raccorder cette extrémité du brise-vide au raccord de douche ». Si le tuyau n'est pas installé de cette manière, l'eau ne coulera pas. Si la douchette manuelle ne comprend pas de brise-vide et que vous souhaiteriez en obtenir un sans frais, veuillez nous contacter au **1-800-525-2774** (uniquement pour les appels provenant des É.-U.) et demandez la pièce n° 20009558.

## UTILISATION DU PRODUIT

### Sélecteur du mode d'aspersion :

Le sélecteur du mode d'aspersion permet de choisir l'un des modes d'aspersion disponibles sur la douchette. Le pivotement d'une petite manette (vers la droite ou vers la gauche) permet la sélection du mode d'aspersion. La manette du



sélecteur d'aspersion permet d'accéder à tous les modes d'aspersion, y compris au ruissellement éconergique.

### Bouton de Ruissellement éconergique (sur certains modèles) :

Pour utiliser le bouton, il suffit d'appuyer sur le bouton de changement d'aspersion situé à l'arrière de la douchette. Pour revenir au mode d'aspersion d'origine, appuyer sur le bouton situé de l'autre côté de la douchette.



