

Register and Save!

waterpik®
sonic-fusion®

Congratulations!

You are now on your way to better oral health!



Save Over \$50!

Register at [waterpik.com/registration](https://www.waterpik.com/registration) to receive exclusive discount code

Offer includes
50% OFF
+ FREE SHIPPING
on your next order
of Sonic-Fusion®
brush heads

We'd love to hear from you!

Connect with Us
@Waterpik



Call: 1-800-525-2774
www.waterpik.com

Waterpik® 14 Day Challenge App

Make water flossing a habit! Try our new mobile App for the best water flossing experience



©2020 Water Pik, Inc.
FN 20028135-FAC

This device is compatible with voltages of 100-240 VAC, 50-60 Hz

- ✓ **Register and Save**
Register your product at [waterpik.com/registration](https://www.waterpik.com/registration) to receive over \$50 in savings (includes 50% OFF your 1st replacement brush heads + FREE shipping!)
- ✓ **Write a Review**
Creating innovative Waterpik® products that inspire better oral health is our passion. We invite you to leave a review by sharing your thoughts on the World's First Flossing Toothbrush on [waterpik.com](https://www.waterpik.com) or the retailer's website.
- ✓ **We're Here to Help**
We hope you are loving your new Sonic-Fusion® flossing toothbrush. If for any reason you are not satisfied or have any product questions, please contact our fast and friendly Customer Service Team based in Fort Collins, Colorado. Sonic-Fusion® is backed by a 3-year manufacturer's warranty.

Call: 1-800-525-2774
Monday-Friday
7 am - 5 pm MST



Chat or E-mail
service@waterpik.com



**Quick Start
Guide Inside!**

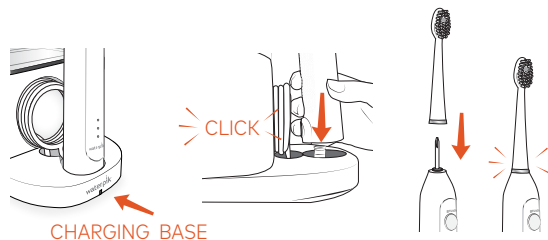


Quick Start Guide

1 GETTING STARTED

Place toothbrush into charging base.
Attach flossing brush head.

Tip: For the best experience and optimal battery performance, keep the toothbrush stored in the charger base when not in use.

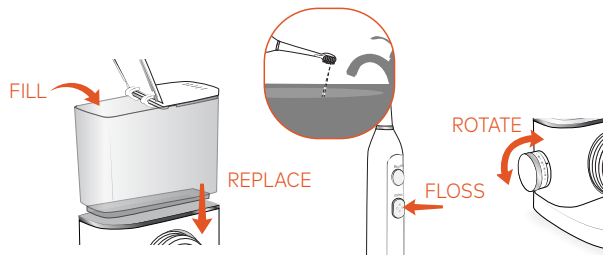


2 PRIMING UNIT (FIRST TIME USE ONLY)

Fill reservoir with warm water and replace it firmly on the base.

Point tip into sink. Press FLOSS button. Rotate pressure knob repeatedly between high and low until water flows.

Note: If Floss mode does not turn on, please contact us.



3 NEED HELP?

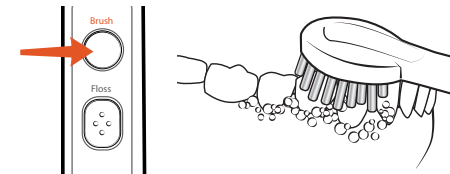
Visit Waterpik.com/WelcomeSF
To watch a How To Video and find additional product support

Call Us! 1-800-525-2774

Sonic-Fusion® Modes

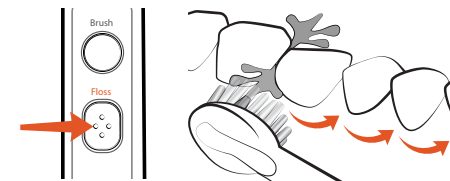
BRUSH

Press BRUSH button, use light pressure and clean all tooth surfaces.



FLOSS

Press FLOSS button and adjust water pressure to desired setting. Keep lips partially closed to allow water to flow into sink.



BRUSH + FLOSS

Press BRUSH button, then press FLOSS button.

