

waterpik®
waterflosser

Congratulations!

You are now on your way
to better oral health!

✓ Register and Save

Register your product at *waterpik.com/registration to receive over **\$50** in savings (includes **50%** off your next order of assorted tips + tip storage case)

*For Canadian customers, register at waterpik.ca/registration.

✓ Write a Review

Creating innovative Waterpik® products that inspire better oral health is our passion. We invite you to *leave a review by sharing your thoughts on the Cordless Freedom Water Flosser on waterpik.com or the retailer's website.

*US customers only

✓ We're Here to Help

We hope you are loving your new Cordless Freedom Water Flosser. If for any reason you are not satisfied or have any product questions, please contact our fast and friendly Customer Service Team based in Fort Collins, Colorado. The Cordless Freedom Water Flosser is backed by a 1-year manufacturer's warranty.

Call: 1-800-525-2774 (USA)
1-888-226-3042 (CAN)
Monday-Friday
7 am - 5 pm MST

Chat or E-mail
service@waterpik.com



**Quick Start
Guide Inside!**



Register and Save!

Save over \$50!

Register at ***Waterpik.com/Registration** to receive exclusive discount code.

*For Canadian customers, register at waterpik.ca/registration

Offer includes
50% off
your next order
of assorted
tips + tip
storage case.



We'd Love to Hear from You!



Connect with Us
@Waterpik



Call: 1-800-525-2774 (USA)
www.waterpik.com

1-888-226-3042 (CAN)
www.waterpik.ca

Waterpik® 14 Day Challenge App



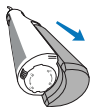
Make water flossing a habit! Try our new mobile App for the best water flossing experience.



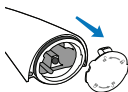
Quick Start Guide

GETTING STARTED

- 1 Remove reservoir.



- 2 To remove battery door, twist, and pull.



- 3 Insert 3 AA batteries.



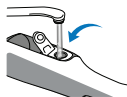
- 4 To replace battery door, line-up arrows, push and twist.



- 5 Insert tip firmly until it clicks into place.

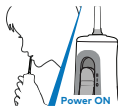


- 6 If the reservoir was removed, insert reservoir back on the unit. Fill reservoir with warm water.



WATER FLOSS

- 7 With water switch in OFF position, place tip in mouth. Slide power switch to low (I) and increase to your liking.



- 8 Lean over sink and close lips enough to prevent splashing, while still allowing water to flow from mouth into the sink.



Keep unit upright during use to ensure continuous water flow.

TECHNIQUE

- 9 Aim water at the gumline at a 90 degree angle. Follow the gumline and pause briefly between teeth.



TO AVOID MESS: KEEP TIP IN MOUTH WHILE UNIT IS ON.

NEED HELP?

Visit Waterpik.com/WelcomWF
To watch a How To Video and find additional product support.

**Call Us! 1-800-525-2774 (USA)
1-888-226-3042 (CAN)**