

1. Isolation of the Area

Isolation of the area helps to prevent contamination from blood and saliva. Placement of a rubber dental dam is mandatory to prevent the potential for inhalation or ingestion of small parts. Tying the ring to a previously placed rubber dam clamp with dental floss is recommended.

Pre-Operative Placement of Ring for Separation (Optional)

When placed prior to and left on during cavity preparation, the ClearView retaining ring helps create the interproximal space required for sectional matrix placement.

2. Sectional Matrix Placement

Select a sectional matrix that most closely approximates the occlusogingival height of the tooth. Over-approximate tooth curvature buccolingually by rolling the contoured matrix with your fingers. This will help keep the matrix ends from interfering with the Ring placement. (figure 1)

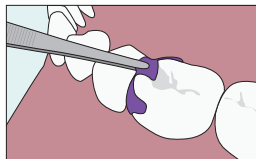


figure 1

3. Wedge Placement

For optimal contour, gingival seal and tooth separation, use Waterpik® wedges. To prevent displacement of the matrix by the restoration material, firmly insert the wedge. (figure 2)

Tip: Keep a finger on the sectional matrix to prevent the wedge from dislodging the matrix during insertion.

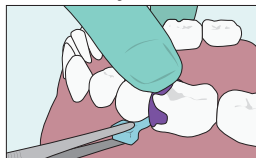


figure 2

4. Ring Placement

Tip: For secure gripping of ring tips to surfaces, dry teeth thoroughly before placement. Grasp the Waterpik® ClearView retaining ring near the tips of the ring with the ring placement forceps. (figure 3) Spread the ClearView ring with the forceps only enough to clear tooth height of contour.

Using the slots on the bottom of the ring tines, fit the ring over the wedge. (figure 4) When ring is securely seated, release and withdraw the forceps.

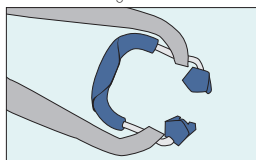


figure 3

5. Contouring to Adjacent Tooth

It is Very Important to push the sectional matrix firmly into contact with the adjacent tooth in the desired contact area.

6. Restorative Application

Apply your preferred restorative material according to manufacturer's instructions. Gross contouring may be accomplished with sectional matrix in place.

7. Removal

Remove ring with forceps.
Remove wedge and sectional matrix with cotton dressing forceps or similar instrument. (figure 5)
Removal of the matrix may require a hemostat.

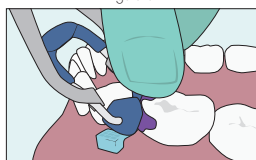


figure 4

8. Finishing

Finish contouring, verify proximal contact and polish the restoration.

Stacking of Rings & MOD Restorations

The Waterpik® ClearView Ring is angled to allow stacking of rings for performing M.O.D.'s and multiple-tooth restorations. Rings may be stacked one over the other. (figure 6)

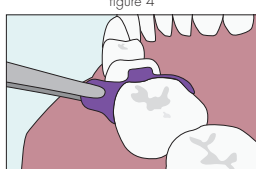


figure 5

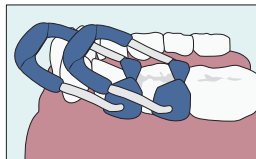


figure 6

TO REORDER

Contact your dental distributor

waterpik®
ClearView Sectional
Matrix System



Complete Kit

Reorder No.
20020223



Universal Ring

Reorder No.
20020225



**Extra Small
(white)**

Reorder No.
20020231



**Small
(light blue)**

Reorder No.
20020232



**Medium
(dark blue)**

Reorder No.
20020233



**Large
(purple)**

Reorder No.
20020234



**Bicuspids 4.6mm
(light gray)**

Reorder No.
20020226



**Bicuspids 3.8mm
with extension
(light blue)**

Reorder No.
20020227



**Bicuspids and
Small Molars
5.5mm
(dark blue)**

Reorder No.
20020228



**Molars 6.4mm
with extension
(purple)**

Reorder No.
20020229



**Molars 6.4mm
(green)**

Reorder No.
20020230

Important Cleaning and Sterilization Instructions:

Waterpik® ClearView Ring and Forceps should be steam autoclaved at 121°C for 15 minutes, followed by a 25 minute air drying time. Use of other sterilization procedures/methods is at the discretion and sole responsibility of the practitioner. It is not recommended to immerse components into disinfection or cold sterilization solutions. Allow retaining ring and forceps to dry prior to storage. The forceps require no additional maintenance and should not be oiled or greased.

Waterpik® ClearView Sectional Matrices and Wedges are supplied nonsterile and are for single use only. Sterilize for use by steam autoclaving, 121°C for 15 minutes, followed by a 25 minute air drying time.

For complete Instructions, including Cleaning and Sterilization, visit www.waterpik.com/matrix

Water Pik, Inc.
1730 E. Prospect Rd.
Fort Collins, CO USA 80553-0001

For questions, contact Water Pik, Inc.:
USA: (800) 525-2020
Canada: (888) 226-3042

www.waterpik.com/matrix

FN 20020609-F AA
1704r0715

Waterpik® is a trademark of Water Pik, Inc. registered in China, Denmark, EU, Hong Kong, India, Japan, Korea, Turkey, and the United States

Waterpik® (stylized) is a trademark of Water Pik, Inc. registered in Australia, Canada, China, EU, Hong Kong, Korea, Russian Federation, Switzerland, and the United States

©2015 Water Pik, Inc.



For Dental Use Only



Non-Sterile



Consult Instructions
For Use
www.waterpik.com/matrix



Wedges and Matrices
Single Use Only